

Salvia



Dream



Chill



Honey



Silver



Breeze



Salvia



Butterscotch



Bisque



Dusk



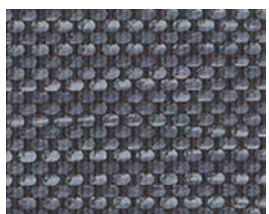
Cedar



Clay



Brownie



Indigo



Jungle



Sumac



Incense

Click on an image to view specifications /
order memo samples.

TECHNICAL INFORMATION

WIDTH/ PATTERN	FIBER CONTENT & BACKING	WEIGHT	PROTECTIVE FINISH	ABRASION RESISTANCE	LIGHT- FASTNESS	APPROX. REPEATS	CI. CODE
54" WEFT 	VINYL SURFACE WITH POLYESTER BACKING	28.0 OZ./ LINEAR YARD ± 1.0 OZ.	ADVANCED SOIL AND STAIN RESISTANT TOP COAT	EXCEEDS 1,300,000 DOUBLE RUBS	CLASS 4.0 650 HOURS	FULL REPEAT SHOWN	W

EXPLANATION OF ACT ICONS FOR UPHOLSTERY

FLAMMABILITY

The measurement of a fabric's performance when it is exposed to specific sources of ignition.

PASSES California Technical Bulletin 117-2013 Section 1

WET & DRY CROCKING

Transfer of dye from the surface of a dyed or printed fabric onto another surface by rubbing.

PASSES Minimum AATCC 8 Dry = Grade 4; Wet = Grade 3

COLORFASTNESS TO LIGHT

Colorfastness to light is a material's degree of resistance to the fading effect of light.

PASSES Minimum AATCC 16: Grade 4 minimum 40hrs

PHYSICAL PROPERTIES

Three physical property tests include: 1 - Martindale Tester to determine a fabric's pilling (the formation of fuzzy balls of fiber on the surface of a fabric); 2 - Breaking Strength to determine the ability of a fabric to withstand tension without breaking or tearing; 3 - Seam Slippage to determine the extent of the pulling apart of fabrics at the seams.

PASSES

Pilling ASTM D4970 (Martindale Tester)

Breaking Strength ASTM D5034 (Grab Test), 50 lbs. minimum in warp and weft

Seam Slippage ASTM D4034, 25 lbs. minimum in warp and weft

ABRASION

Abrasion is the ability of a fabric to withstand damage from wear and rubbing.

PASSES ASTM D4157
(ACT approved #10 Cotton Duck)
30,000 double rubs Wyzenbeek Method

CLEANING CODE DEFINITIONS

W - Clean with water-based foam or water-based cleaners only. Do not use solvents. We recommend using a professional cleaning service. Bleach solutions of up to 10% may be used for more difficult stains.

Grade 5 as of July 2022. This document is a living document and uncontrolled when printed. Price grade is subject to change.

TO VIEW OUR ENTIRE FABRIC COLLECTION, VISIT ALLSEATING.COM

QUESTIONS? Email us at marketing@allseating.com T 1 800 563 3502 F 1 800 272 9911

TORONTO

5800 Avebury Road, Unit 2
Mississauga, ON L5R 3M3

CHICAGO*

325 North Wells Street, Suite 210
Chicago, IL 60654

*By appointment only

NEW YORK*

1140 Broadway, Suite 307
New York, NY 10001