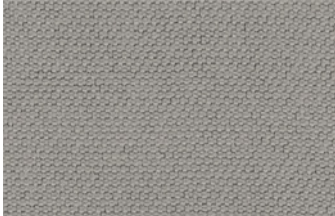
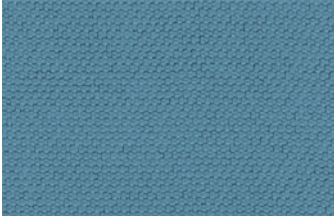




FLEUR Clay



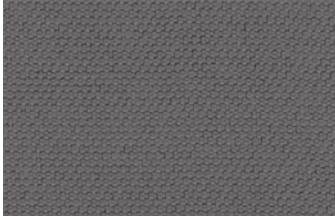
Lychee



Morning Glory



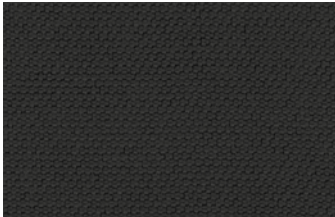
Trail



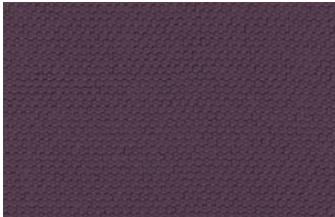
Lavender



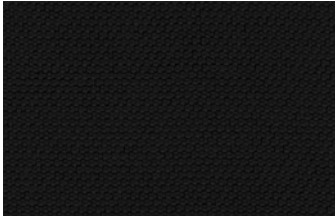
Brunnera



Earth



Fuschia



Black Rose

# Technical Information

Width/ Pattern	Fabric Grade	Fiber Content & Backing	Weight	Protective Finish	Abrasion Resistance	Light- fastness	Approx. Repeats	Cl. Code
57" Fleur     	1	100% Polyester	220 g/m <sup>2</sup>	N/A	83,000 Double Rubs	Min. 40 Hr. Level 4	Full Repeat Shown	WS

## EXPLANATION OF ACT ICONS FOR UPHOLSTERY

### Fire Retardancy

Flammability testing determined as fabric's resistance to burning.

### Colorfastness to Wet and Dry Crocking

Colorfastness to wet & dry crocking refers to the rubbing off of color from the fabric onto clothing, hands or other materials and can occur under wet or dry conditions.

### Colorfastness to Light

Colorfastness to light is the degree to which fabric will retain its color when exposed to light.

### Physical Properties

3 physical property tests include: brush pill test to determine a fabric's pilling. Breaking/tensile strength is the ability of a fabric to withstand tension without breaking or tearing. Seam slippage is the pulling apart of fabrics at the seams.

### Abrasion

Abrasion is the ability of a fabric to withstand damage from wear and rubbing. There is a general contract specification as well as heavy duty specification.

#### TORONTO

5800 Avebury Road, Unit 2  
Mississauga, ON L5R 3M3

SKU BF9955

#### CHICAGO\*

325 North Wells Street, Suite 210  
Chicago, IL 60654

Printed in Canada 09/2018

#### NEW YORK\*

1140 Broadway, Suite 307  
New York, NY 10001

\*By appointment only

#### TO VIEW OUR ENTIRE FABRIC

COLLECTION, VISIT [ALLSEATING.COM](http://ALLSEATING.COM)

T 1 800 563 3502 F 1 800 272 9911