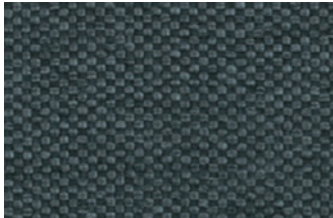




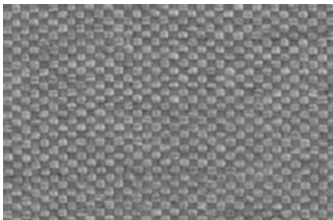
NORWOOD Aspen



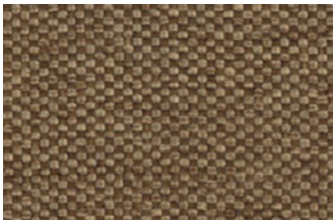
Desert



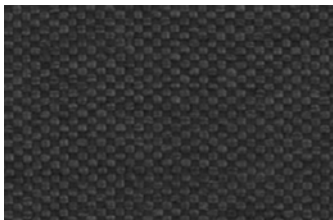
Storm



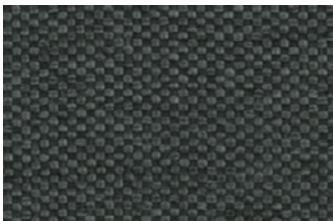
Limestone



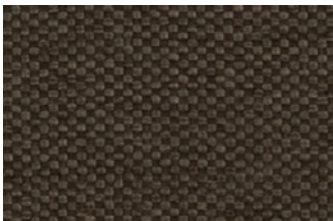
Mulch



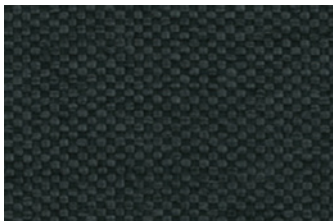
Titan



Slate



Bark



Mariana

Technical Information

Width/ Pattern	Fabric Grade	Fiber Content & Backing	Weight	Protective Finish	Abrasion Resistance	Light- fastness	Approx. Repeats	Cl. Code
57" Norwood     	2	100% Polyester	370 g/m ²	N/A	90,000 Double Rubs	Min. 40 Hr. Level 4	Full Repeat Shown	WS

EXPLANATION OF ACT ICONS FOR UPHOLSTERY

Fire Retardancy

Flammability testing determined as fabric's resistance to burning.

Colorfastness to Wet and Dry Crocking

Colorfastness to wet & dry crocking refers to the rubbing off of color from the fabric onto clothing, hands or other materials and can occur under wet or dry conditions.

Colorfastness to Light

Colorfastness to light is the degree to which fabric will retain its color when exposed to light.

Physical Properties

3 physical property tests include: brush pill test to determine a fabric's pilling. Breaking/tensile strength is the ability of a fabric to withstand tension without breaking or tearing. Seam slippage is the pulling apart of fabrics at the seams.

Abrasion

Abrasion is the ability of a fabric to withstand damage from wear and rubbing. There is a general contract specification as well as heavy duty specification.

TORONTO

5800 Avebury Road, Unit 2
Mississauga, ON L5R 3M3

SKU BF9952

CHICAGO*

325 North Wells Street, Suite 210
Chicago, IL 60654

Printed in Canada 09/2018

NEW YORK*

1140 Broadway, Suite 307
New York, NY 10001

*By appointment only

TO VIEW OUR ENTIRE FABRIC

COLLECTION, VISIT ALLSEATING.COM

T 1 800 563 3502 F 1 800 272 9911