

FEDORA
GATSBY
SAXONY
PORTER
SANCTUARY
OMEGA
LUDLOW
RYDER
KINSEY
FAWN
BITUMEN
TUSCAN
MARBLE
BARLEY
ATLANTIS
HONEY
QUARTZ
GRIFFIN
SCARLET
ZINC
SAFFRON
HUNTER
MANDARIN
NEPTUNE
TANGELO
STORM

WOVEN & COATED
MAYERFABRICS



FEDORA/GATSBY
Light Grey



Dew



Fawn



Aegean



Dapper



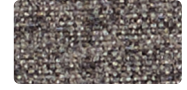
Opal



Topaz



Indigo



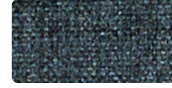
Charcoal



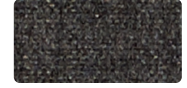
Cactus



Tangelo



Midnight



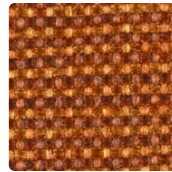
Bitumen



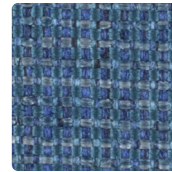
SAXONY
Oatmeal



Latte



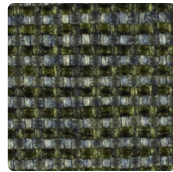
Mandarin



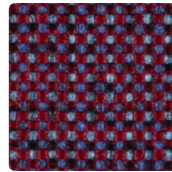
Neptune



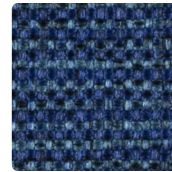
Metal



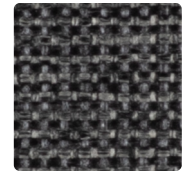
Forest



Boysenberry



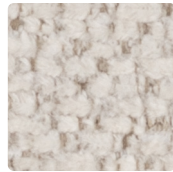
Indigo



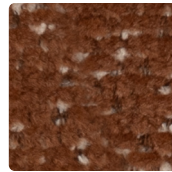
Storm



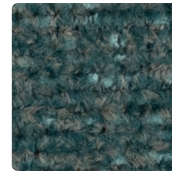
PORTER
Fossil



Marble



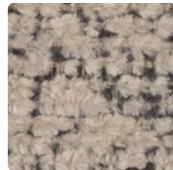
Tuscan



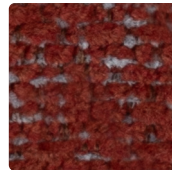
Eucalyptus



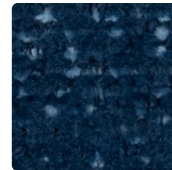
Nickel



Barley



Sangria



Ink



Smoke



SANCTUARY
Ivory



Orchid



Honey



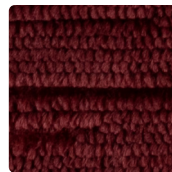
Atlantis



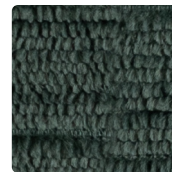
Meteorite



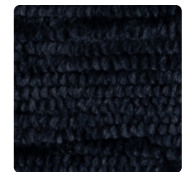
Taupe



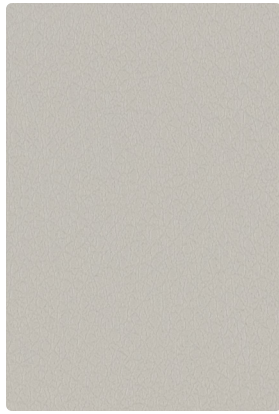
Bordeaux



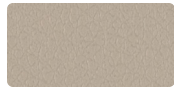
Evergreen



Prussian



RYDER
Light Grey



Pumice



Saffron



Sapphire



Zinc



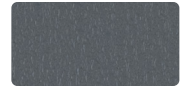
Griffin



Orange



Parsley



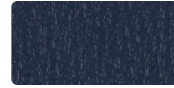
Shark Fin



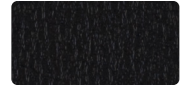
Mocha



Scarlet



Navy



Black



KINSEY
Quartz



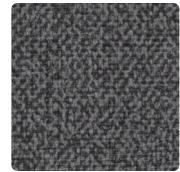
Linen



Golden



Agate



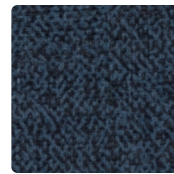
Pepper



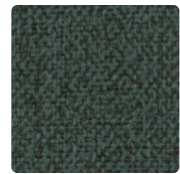
Cobblestone



Allspice



Navy



Hunter



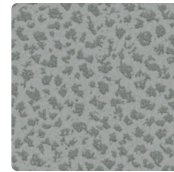
LUDLOW
Vanilla



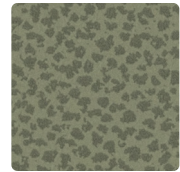
Quartz



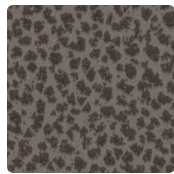
Tungsten



Opal



Willow



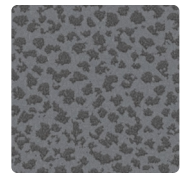
Griffin



Cranberry



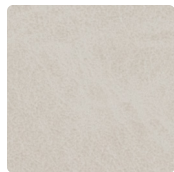
Persian



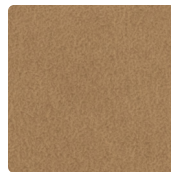
Boulder



OMEGA
Stone



Ivory



Khaki



Quarry



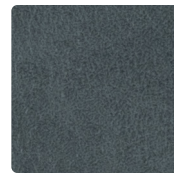
Hunter



Taupe



Clay



Bluestone



Granite

Technical Information

Width/ Pattern	Fiber Content & Backing	Weight	Protective Finish	Abrasion Resistance	Light- fastness	Approx. Repeats	Cl. Code
54" Fedora 	100% Polyester	17.2 oz./ Linear Yard	Stain Repellent	100,000 Double Rubs	Class 4	N/A	W
54" Gatsby 	100% Polyester, Crypton® Moisture Barrier	24.3 oz./ Linear Yard	Crypton®	100,000 Double Rubs	Class 4	N/A	W Bleach Cleanable (10:1)
54" Sanctuary 	100% Polyester, Acrylic Backing	20.19 oz./ Linear Yard	Nanotex® by Crypton	100,000 Double Rubs	Class 4	N/A	W Bleach Cleanable (10:1)
54" Saxony 	100% Polyester, Acrylic Backing	10.1 oz./ Linear Yard	None	100,000 Double Rubs	Class 4	N/A	W Bleach Cleanable (10:1)
54" Porter 	100% Polyester, Crypton® Moisture Barrier	18.29 oz./ Linear Yard	Crypton®	60,000 Double Rubs	Class 4	N/A	W Bleach Cleanable (10:1)
54" Kinsey 	70% Vinyl - Phthalate Free Face, 30% Polyester Backing	32 oz./ Linear Yard	Soil & Stain Top Resistant Coat, w/Ink Resistance	195,000 Double Rubs	Class 4	N/A	WS Bleach Cleanable (10:1)
54" Ludlow 	70% Vinyl - Phthalate Free Face, 30% Polyester Backing	32 oz./ Linear Yard	Soil & Stain Top Resistant Coat	250,000 Double Rubs	Class 5	N/A	WS Bleach Cleanable (10:1)
54" Omega 	43% Polyurethane Polycarbonate Face, 57% Polyester Backing	25.4 oz./ Linear Yard	Write Away® Soil & Stain Top Coat w/ Ink Resistance	250,000 Double Rubs	Class 5	N/A	WS Bleach Cleanable (10:1)
54" Ryder 	88% Vinyl - Phthalate Free Face, 12% Polyester Backing	30 oz./ Linear Yard	Soil & Stain Top Resistant Coat	500,000 Double Rubs	Class 4	N/A	WS Bleach Cleanable (10:1)

EXPLANATION OF ACT ICONS FOR UPHOLSTERY

Fire Retardancy

Flammability testing determined as fabric's resistance to burning.

Wet & Dry Crocking

Transfer of dye from the surface of a dyed or printed fabric onto another surface by rubbing.

Colorfastness to Light

Colorfastness to light is the degree to which fabric will retain its color when exposed to light.

Physical Properties

Three (3) physical property tests include:
1 - Brush pill test to determine a fabric's pilling;
2 - Breaking/tensile strength is the ability of a fabric to withstand tension without breaking or tearing;
3 - Seam slippage to determine the extent of the pulling apart of fabrics at the seams.

Abrasion

Abrasion is the ability of a fabric to withstand damage from wear and rubbing.

Cleaning Code Definitions

WS - clean with water-based cleanser or mild, water-free dry cleaning solvent.

W - clean with water-based cleanser.

TO VIEW OUR FABRIC COLLECTION, VISIT ALLSEATING.COM

QUESTIONS? Email us at marketing@allseating.com ☎ 1 800 563 3502 ☎ 1 800 272 9911

TORONTO

5800 Avebury Road, Unit 2
Mississauga, ON L5R 3M3

SKU B10122 / SEPTEMBER 2025

CHICAGO*

325 North Wells Street, Suite 210
Chicago, IL 60654

*By appointment only

ASWCCD 51025