

SYNERGY
PATINA
MAIN LINE FLAX
SERENDIPITY
LAYERED
VENTURE
TEAM
CAMDEN
CHEMISTRY
STANMORE
CONTRIBUTION
SEAMLESS
INTERTWINE
KINSHIP
UNITY
LEVEL
BOND
CORDIA
GATHER
INTEGRATE
PARTNER
CHAIN
SUCCESS
COMPLY
TEMPLE
COLLECTIVE

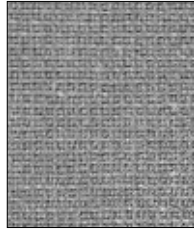
NATURAL WOOLS
camira

Wool Selections

www.camirafabrics.com



Synergy
Serendipity LDS08



Patina
Layered PAT12



Synergy
Level LDS20



Synergy
Venture LDS05



Synergy
Chain LDS19



Main Line Flax
Upminster MLF20



Synergy
Pair LDS31



Synergy
Bond LDS24



Synergy
Team LDS21



Synergy
Affix LDS32



Main Line Flax
Archway MLF02



Patina
Aged PAT02



Patina
Chiselled PAT24



Synergy
Partner LDS16



Synergy
Tag LDS33



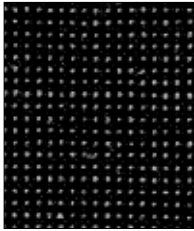
Main Line Flax
Morden MLF12



Main Line Flax
Bank MLF23



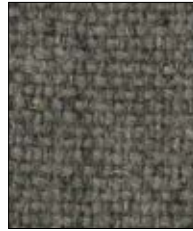
Synergy
Hook LDS29



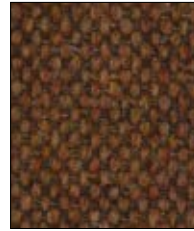
Patina
Anneal PAT35



Synergy
Chemistry LDS35



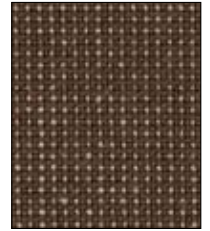
Main Line Flax
Camden MLF26



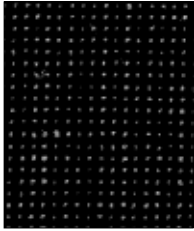
Main Line Flax
Stockwell MLF15



Synergy
Linea LDS37



Patina
Timeworn PAT08



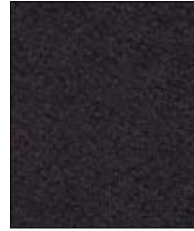
Patina
Toughened PAT20



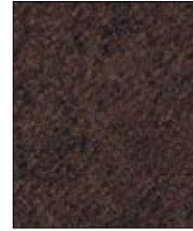
Main Line Flax
Temple MLF16



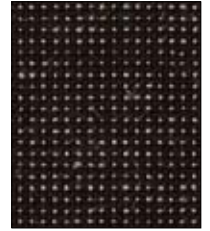
Synergy
Unity LDS38



Synergy
Bridge LDS26



Synergy
Collective LDS39



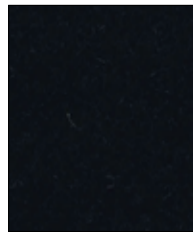
Patina
Seasoned PAT03



Synergy
Mix LDS17



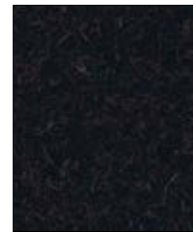
Main Line Flax
Edgware MLF28



Synergy
Seek LDS27



Synergy
Compound LDS25



Synergy
Co-operate LDS40



Synergy
Wed LDS34



Main Line Flax
Newbury MLF10



Main Line Flax
Waterloo MLF21



Synergy
Support LDS55



Synergy
Regard LDS54



Synergy
Bracket LDS23



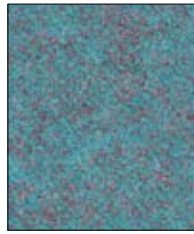
Synergy
Append LDS49



Synergy
Huddle LDS65



Main Line Flax
Bethnal MLF25



Synergy
Kinship LDS56



Main Line Flax
Bayswater MLF24



Synergy
Pact LDS53



Main Line Flax
Monument MLF09



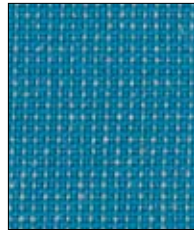
Synergy
Guild LDS63



Patina
Salvaged PAT06



Synergy
Order LDS64



Patina
Languish PAT31



Synergy
Comply LDS52



Main Line Flax
Kensington MLF07



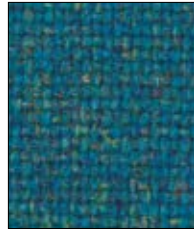
Patina
Seamless PAT23



Synergy
Collaborate LDS68



Main Line Flax
Holborn MLF05



Main Line Flax
Stanmore MLF37



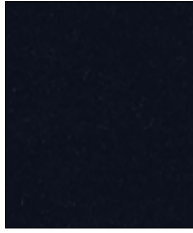
Synergy
League LDS50



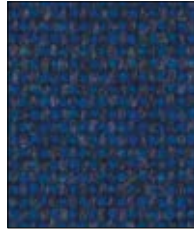
Main Line Flax
Finsbury MLF30



Synergy
Alike LDS62



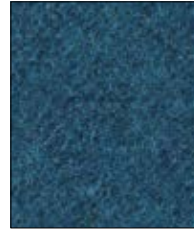
Synergy
Sync LDS69



Main Line Flax
Brompton MLF35



Main Line Flax
Pimlico MLF34



Synergy
Group LDS59



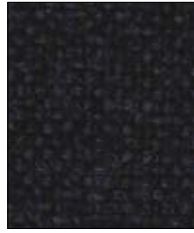
Synergy
Interfuse LDS48



Patina
Rippled PAT19



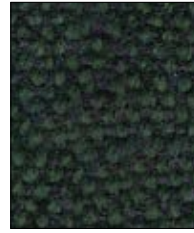
Main Line Flax
Victoria MLF19



Main Line Flax
Tower MLF36



Synergy
Accord LDS60



Main Line Flax
Greenford MLF32



Synergy
Couple LDS41



Synergy
Lateral LDS28



Synergy
Summon LDS45



Patina
Glisten PAT25



Main Line Flax
Barbican MLF03



Synergy
Gather LDS46



Main Line Flax
Tooting MLF17



Main Line Flax
Lambeth MLF08



Synergy
Integrate LDS47



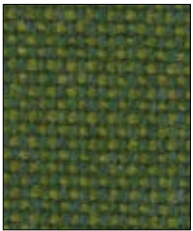
Synergy
Marry LDS43



Patina
Irregular PAT09



Patina
Braise PAT27



Main Line Flax
Tufnell MLF18



Main Line Flax
Goldhawk MLF31



Synergy
Contribution LDS75



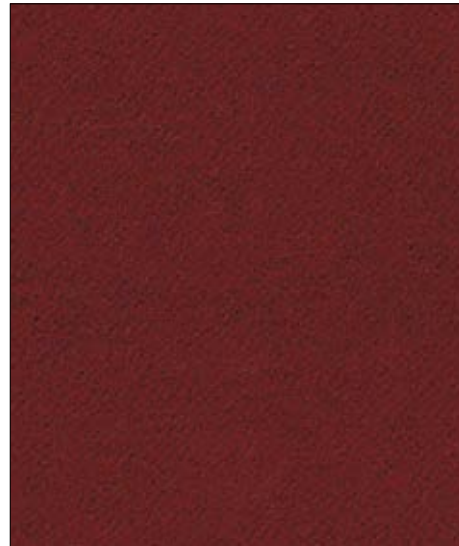
Patina
Flecked PAT38



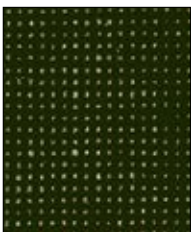
Patina
Inlay PAT37



Synergy
Combo LDS77



Synergy
Cordial LDS78



Patina
Restored PAT07



Synergy
Intertwine LDS42



Synergy
Success LDS76

Technical information



EN

Grade

5

Composition

Synergy: 95% Pure New Wool, 5% Nylon

Patina: 69% Wool, 22% Flax, 8% Nylon, 1% Viscose
Non metallic dyestuffs

Main Line Flax: 70% Pure New Wool, 30% Flax

Environmental

Synergy/Patina/Main Line Flax: Certified to the EU Ecolabel

Main Line Flax: Rapidly renewable and compostable
Made from wool and bast fiber

Width

54 inches minimum

Weight

Synergy: 11^{3/4} oz/sq yd ±5% (17^{3/4} oz/running yd ±5%)

Patina: 9^{3/4} oz/sq yd ±5% (14^{1/2} oz/running yd ±5%)

Main Line Flax: 13oz/sq yd ±5% (19^{1/4} oz/running yd ±5%)

*Abrasion Resistance

Synergy: ASTM D4966 Martindale method, Heavy Duty Upholstery independently certified to ≥100,000 cycles.

Patina: ASTM D4966 Martindale method, Heavy Duty Upholstery independently certified to ≥100,000 cycles.

Main Line Flax: ASTM D4157 Wyzenbeek method, Heavy Duty Upholstery independently certified to 100,000 double rubs.

Covered by a full and comprehensive 10 year guarantee (full details available)

Flammability

California Technical Bulletin 117 - 2013

NFPA 260 + UFAC - Class 1

BS 7176 Low Hazard

Patina/Main Line Flax:

ASTM E84 Class 1 or A (Adhered)

ASTM E84 Class 2 or B (Un-adhered)

Synergy: ASTM E84 Class 2 or B (Adhered)

ASTM E84 Class 2 or B (Un-adhered)

Optional please specify when ordering:

Synergy: ASTM E84 Class 1 or A (Adhered) when FR treated

Note: Flammability performance is dependent on components used.

Light Fastness

AATCC-16 (40 hours) Class 4

Color Fastness to Crocking

AATCC-8 (Dry: 4, Wet: 3)

Cleaning code

W/S

Water-based cleaning agent or solvent: Depending on the stain, you can use a dry-cleaning solvent, the foam of a mild detergent, or upholstery shampoo.

*Camira recognizes that the number of Martindale cycles/Wyzenbeek double rubs do not reflect the actual wear performance of fabrics. We're so confident in the durability of our products that we provide a robust 10 year guarantee (full details available). This product is externally certified, details of which are on our website and available from our customer services team.

Multiple factors affect fabric durability and appearance retention, including end-user application and correct maintenance. Results above 100,000 cycles/double rubs have not been shown to be a reliable indicator of increased fabric lifespan.

Batch to batch variations in shade may occur within commercial tolerances. We reserve the right to alter technical specifications without notice. The Unregistered Design Rights and the Copyright in all designs are the exclusive property of Camira Fabrics Limited.

CODES IN THE CARD INTERIOR ARE NOT TO BE REFERENCED FOR ANY ALLSEATING ORDER.

F

Grade

5

Composition

Synergy: 95% Laine Vierge, 5% Nylon

Patina: 69% Laine, 22% Lin, 8% Nylon, 1% Viscose
Teintures non métalliques

Main Line Flax: 70% Laine Vierge, 30% Lin

Écologique

Synergy/Patina/Main Line Flax: Avec le certificat EU Ecolabel

Main Line Flax: Rapidement renouvelable et compostable. Fabriqué avec de la Laine et des fibres originaire de Tiges

Largeur

54 pouces minimum

Poids

Synergy: 11^{3/4} oz/sq yd ±5% (17^{3/4} oz/running yd ±5%)

Patina: 9^{3/4} oz/sq yd ±5% (14^{1/2} oz/lin. yd ±5%)

Main Line Flax: 13oz/sq yd ±5% (19^{1/4} oz/lin. yd ±5%)

*Résistance à l'abrasion

Synergy: ASTM D4966 Martindale method, Usage intense certificat indépendant ≥100,000 cycles.

Patina: ASTM D4966 Martindale method, Usage intense certificat indépendant ≥100,000 cycles.

Main Line Flax: ASTM D4157 Wyzenbeek method, Usage intense certificat indépendant 100,000 double rubs.

Avec une garantie totale de durabilité de 10 ans (renseignements complémentaires disponibles)

Flammabilité

California Technical Bulletin 117 - 2013

NFPA 260 + UFAC - Class 1

BS 7176 Low Hazard

Patina/Main Line Flax:

ASTM E84 Class 1 or A (Adhered)

ASTM E84 Class 2 or B (Un-adhered)

Synergy: ASTM E84 Class 2 or B (Adhered)

ASTM E84 Class 2 or B (Un-adhered)

Optional please specify when ordering:

Synergy: ASTM E84 Class 1 or A (Adhered) when FR treated

Note: Le comportement non-feu dépend de la mousse utilisée.

Solidité à la Lumière

AATCC-16 (40 heures) Class 4

Solidité à la Crocking

AATCC-8 (Sec: 4, Mouillé: 3)

Nettoyage

W/S

Water-based cleaning agent or solvent: Depending on the stain, you can use a dry-cleaning solvent, the foam of a mild detergent, or upholstery shampoo.

*Camira reconnaît que le nombre de Martindale cycles/Wyzenbeek double rubs ne reflète pas la performance de l'usure réelle des tissus. Nous sommes tellement confiants dans la pérennité de nos produits que nous offrons une garantie solide de 10 ans (plus de détails disponibles). Cette gamme est certifiée externe, vous pouvez d'ailleurs trouver plus de détails sur notre site internet ou en contactant un membre de notre Service Clients.

La durabilité d'un tissu et sa capacité à conserver son aspect sont affectées par divers facteurs, y compris son environnement d'installation et son entretien. Un résultat de 100 000 ou plus (Martindale cycles/Wyzenbeek double rubs) n'est pas un indicateur fiable quant à la longévité d'un tissu.

Une variation de couleurs peut provenir (commerciallement tolérable). Nous réservons le droit de changer les spécifications techniques sans préavis. Les Droits de Conception non-enregistrés et les droits d'auteur de tous les motifs sont la propriété exclusive de Camira Fabrics Limited.

LES CODES À L'INTÉRIEUR DU NUancier NE DEVRAIENT PAS ÊTRE RÉFÉRENCES SUR AUCUNE COMMANDE DE ALLSEATING.

ES

Grupo

5

Composición

Synergy: 95% Pura Lana Virgen, 5% Nylon

Patina: 69% Lana, 22% Lino, 8% Nylon, 1% Viscosa
Tintes no metálicos

Main Line Flax: 70% Pura Lana Virgen, 30% Lino

Ambiental

Synergy/Patina/Main Line Flax: Certificado con EU Ecolabel

Main Line Flax: Rapidamente renovable y compostable. Producido con lana y fibras naturales

Ancho

54 pulgadas mínimo

Peso

Synergy: 11^{3/4} oz/sq yd ±5% (17^{3/4} oz/running yd ±5%)

Patina: 9^{3/4} oz/sq yd ±5% (14^{1/2} oz/ld ±5%)

Main Line Flax: 13oz/sq yd ±5% (19^{1/4} oz/ld ±5%)

*Resistencia a la abrasión

Synergy: ASTM D4966 Martindale method, Uso intenso, certificado independientemente a ≥100,000 cycles.

Patina: ASTM D4966 Martindale method, Uso intenso, certificado independientemente a ≥100,000 ciclos.

Main Line Flax: ASTM D4157 Wyzenbeek method, Uso intenso, certificado independientemente a 100,000 double rubs.

Con garantía de uso 10 años (más información disponible bajo consulta)

Inflamabilidad

California Technical Bulletin 117 - 2013

NFPA 260 + UFAC - Class 1

BS 7176 Low Hazard

Patina/Main Line Flax:

ASTM E84 Class 1 or A (Adhered)

ASTM E84 Class 2 or B (Un-adhered)

Synergy: ASTM E84 Class 2 or B (Adhered)

ASTM E84 Class 2 or B (Un-adhered)

Optional please specify when ordering:

Synergy: ASTM E84 Class 1 or A (Adhered) when FR treated

Note: El grado de Inflamabilidad depende del tipo de foam utilizado.

Solidez a la Luz

AATCC-16 (40 horas) Class 4

Solidez al Rozamiento

AATCC-8 (Seco: 4, Húmedo:3)

Limpieza

W/S

Water-based cleaning agent or solvent: Depending on the stain, you can use a dry-cleaning solvent, the foam of a mild detergent, or upholstery shampoo.

*Camira reconoce que el número de Martindale cycles/Wyzenbeek double rubs no refleja el rendimiento real del desgaste de los tejidos. Estamos tan seguros de la durabilidad de nuestros tejidos que ofrecemos una garantía íntegra de 10 años (los detalles completos están disponibles). Esta gama está certificada externamente, todos los detalles están disponibles en nuestra web y en el departamento de atención al cliente.

Muchos factores afectan la durabilidad y aspecto del tejido, incluyendo al usuario final y mantenimiento apropiado. Por encima de 100,000 ciclos/double rubs, no se ha demostrado doble frotamiento que indiquen una durabilidad mayor del tejido.

Nota: las variaciones de lote a lote en la sombra se puede producir dentro de tolerancias comerciales. Nos reservamos el derecho a efectuar modificaciones técnicas sin previo aviso. Los derechos sobre los diseños no registrados y los derechos de autor en todos los diseños son propiedad exclusiva de Camira Fabrics Limited.

LOS CÓDIGOS QUE SE MUESTRAN EN EL INTERIOR DEL MUESTRARIO NO DEBEN SER REFERENCIA PARA PEDIDOS DE ALLSEATING.

TORONTO

5800 Avebury Road, Unit 2
Mississauga, ON L5R 3M3

SKU BF9947

CHICAGO*

325 North Wells Street, Suite 210
Chicago, IL 60654

Printed in USA 04/2018

NEW YORK*

1140 Broadway, Suite 307
New York, NY 10001

*By appointment only

FOR ADDITIONAL COLORS OR TO VIEW THE ENTIRE FABRIC COLLECTIONS, VISIT WWW.ALLSEATING.COM

T 1 800 563 3502 F 1 800 272 9911