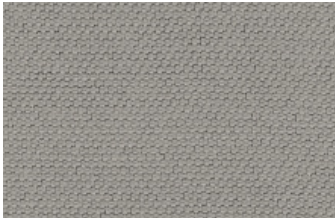
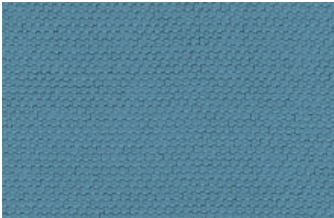




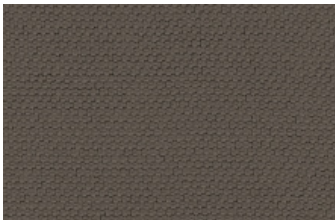
FLEUR Clay



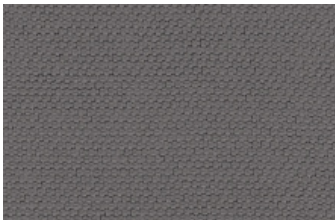
Lychee



Morning Glory



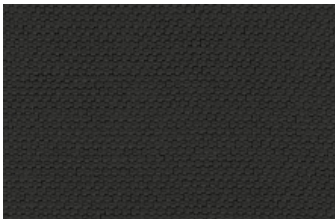
Trail



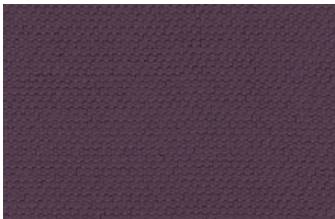
Lavender



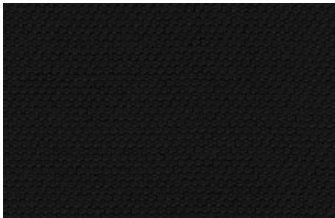
Brunnera



Earth



Fuschia



Black Rose

Technical Information

Width/ Pattern	Fabric Grade	Fiber Content & Backing	Weight	Protective Finish	Abrasion Resistance	Light- fastness	Approx. Repeats	Cl. Code
57" Fleur     	1	100% Polyester	220 g/m ²	N/A	83,000 Double Rubs	Min. 40 Hr. Level 4	Full Repeat Shown	WS

EXPLANATION OF ACT ICONS FOR UPHOLSTERY

Fire Retardancy

Flammability testing determined as fabric's resistance to burning.

Colorfastness to Wet and Dry Crocking

Colorfastness to wet & dry crocking refers to the rubbing off of color from the fabric onto clothing, hands or other materials and can occur under wet or dry conditions.

Colorfastness to Light

Colorfastness to light is the degree to which fabric will retain its color when exposed to light.

Physical Properties

3 physical property tests include: brush pill test to determine a fabric's pilling. Breaking/tensile strength is the ability of a fabric to withstand tension without breaking or tearing. Seam slippage is the pulling apart of fabrics at the seams.

Abrasion

Abrasion is the ability of a fabric to withstand damage from wear and rubbing. There is a general contract specification as well as heavy duty specification.

Cleaning Code Definitions

WS - Water-base cleaning agents or foam.

TORONTO

5800 Avebury Road, Unit 2
Mississauga, ON L5R 3M3

SKU BF9955

CHICAGO*

325 North Wells Street, Suite 210
Chicago, IL 60654

Printed in Canada 01/2021

NEW YORK*

1140 Broadway, Suite 307
New York, NY 10001

*By appointment only

TO VIEW OUR ENTIRE FABRIC

COLLECTION, VISIT ALLSEATING.COM

† 1 800 563 3502 F 1 800 272 9911